

“Pointed Pen Patterns and Flower Design”

A Zoom Workshop with Joy Daniels

Saturday March 19th, 10am - 4pm

Cost members £20/non-members £25

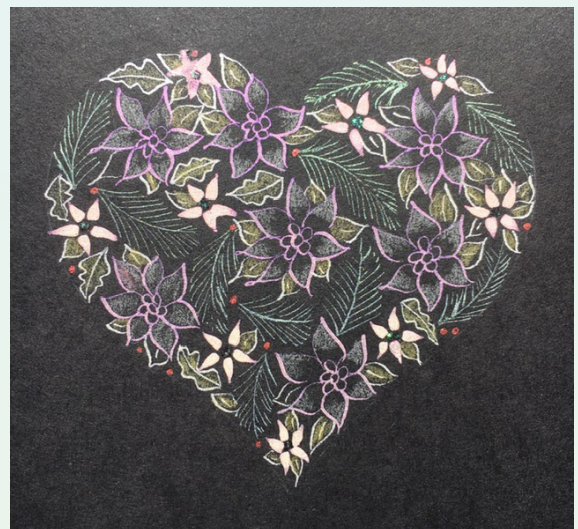
Materials

- Flexible pointed nibs, the type suitable for copperplate – have a few different ones to try, or one for each colour if you wish.
- A couple of brushes to mix paint with and a water pot. Extra brushes would be useful (cheap ones are fine) to save washing the brushes for every colour change.
- Some offcuts of HP paper if you have some, around A5 size.
- Rubber, soft pencil and a soapstone pencil if you have one.
- Black card/paper (or any dark coloured card or paper). Red or green are good for Christmas designs. Around A5 size.
- Finetec or other metallic paints if you have them and/or Dr Martin's Bleedproof white for working on dark backgrounds. Gouache paints in colours of your choice for working on light backgrounds. If you have palettes of colours mixed for other projects they might be useful, or if you have some mixed in little pots.
- Coloured pencils for colouring in outline shapes. You can use metallic pencils if you already have them, but they're not necessary.
- Shapes to draw round. If you can collect some shapes of letters or numbers before the class that would be good. Look out for packaging such as cereal packets or pizza boxes which have apertures cut out to show the contents – sometimes greetings cards that you have received may have heart, flower or oval shapes cut out that you could draw round. Even 'cookie cutters' can be used to draw round – have a look in your cupboards and see what you already have!

Numbers and letters could be printed from the computer, and enlarged to the size you want on a photocopier (just the outline is enough), they don't have to be solid black. If you prefer, you can draw any letters or numbers free-hand before the class.

- If you'd like to add a little sparkle, a dot of Stickles glitter glue can add the finishing touch.

You could practise the initial patterns with ink on scrap paper before going ahead with the better card or paper.



To book a place on this workshop, please contact Lynda Marsh by email: lyndamarsh2013@gmail.com